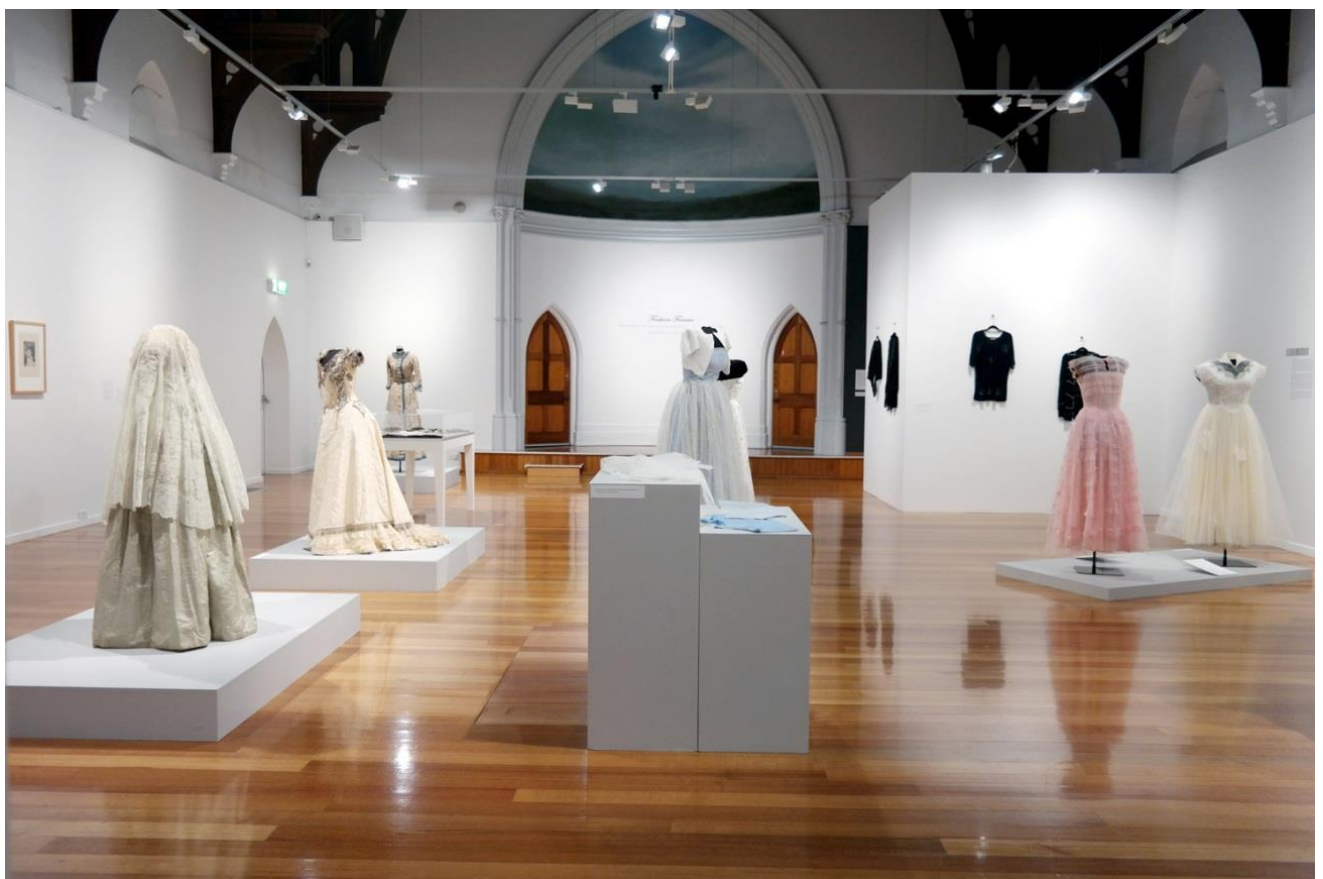


DEVONPORT REGIONAL GALLERY

Director's Annual Report 2014/15



Cover image: *Fashion Fancies: Textiles from the DCC Permanent Collection* (installation view)

PROFILE

The Devonport Regional Gallery is owned and operated by the Devonport City Council. It is situated in the Devonport CBD in a heritage building, a converted Baptist Church. The objectives of the Gallery are to:

- curate high quality exhibitions focussing on contemporary art, craft and design that appeal to a broad audience, including the general community, tourists, students, artists, youth and elderly
- provide a continuing variety of quality public programs to engage and educate the Devonport community in visual art and culture
- establish greater engagement, interest and knowledge regarding visual art and culture within the local community
- provide support for professional artists living on the North West Coast and throughout Tasmania
- establish and effectively manage an excellent collection of contemporary Tasmanian art, craft, and design

MISSION

The Devonport Regional Gallery's mission is to provide an exhibition program and collection of the highest standard for the benefit of the community, and to promote inspiration and knowledge for the benefit of the Gallery's diverse audiences. The Gallery aims to enhance public understanding and enjoyment of visual art, craft and design through the delivery of a high quality and engaging exhibition, education and events program. The Gallery endeavours to annually deliver two or more exhibitions curated by its staff, including exhibitions curated from the DCC Permanent Collection and a range of touring exhibitions.

DIRECTORS REPORT

The year 2014–15 has been one of growth and change at the Devonport Regional Gallery. In late 2014 we welcomed Dianne Sheehan, our current Education and Public Programs Officer, onto staff and farewelled part-time Curator of Collections, Dunja Rmandic who took up a full-time position in programing at the Art Gallery of Western Australia earlier in 2015.

While visitor numbers have remained steady, the Gallery has seen an increase in Education and Public Program participation, which reflects the success of some of the new programs and promotions initiated in the past ten months. The small DRG team has also managed projects outside the Gallery including: outreach programs; a DRG national touring exhibition; the loan of works from the DCC Permanent Collection for national touring; presentations to community groups and judging art prizes. The biennial *Tidal: City of Devonport Art Award* received record entries. To reflect the importance of the award within Australia, Council approved a title change to *Tidal: City of Devonport National Art Award*. The Tidal Festival provided locals with the opportunity to attend various outdoor workshops and a forum at the Gallery.

The exhibition program consisted of major exhibitions including three exhibitions curated from the Permanent Collection, one Solo Commission curated by the Director, four national touring exhibitions, one community art exhibition and three emerging artists' exhibitions in The Little Gallery.

STAFF

Dr Ellie Ray, Director (P/T)

Dunja Rmandic, Curator of Collections (P/T to Feb 2015)

Emily Kennel, Curator of Collections (P/T contracted from May 2015)

Dianne Sheehan, Education and Public Programs (F/T)

Tracy Broomhall, Gallery Administrator (P/T)

Andrew Worsley, Installation and Collections Assistant (Casual)

Georgia Hyde, Gallery Assistant (Casual)

ATTENDANCE RECORDS

Overall attendance: 24,077

Exhibitions: 18,837

Education and Outreach: 2,029

Public Programs and Events: 3,211

STAFF-CURATED EXHIBITIONS

Fashion Fancies: Textiles from the Moon Collection, DCC Permanent Art Collection, curated by Dunja Rmandic

Others: Colin Langridge, Solo Commission Exhibition, curated by Dr Ellie Ray

ReViewing: Lisa Garland, Troy Ruffels, Ilona Schneider, Brian Sollors, The Robinson Photographic Collection, curated by Dr Ellie Ray & Dunja Rmandic

DRG TOURING EXHIBITIONS

As previously reported in the 2012–13 and the 2013–14 annual reports, the exhibition *Felt Presence*, curated by Dr Ellie Ray as part of 10 Days on the Island 2013, was selected for national touring by the Contemporary Art Tasmania Touring Committee in 2013. The exhibition toured to Lake Macquarie City Gallery, New South Wales, in 2014, and Wodonga Regional Gallery, Victoria, in early 2015. *Felt Presence* will have its final showing at MAC (Moonah Arts Centre) in July 2015. Ellie Ray was invited to open the exhibition in Lake Macquarie, which coincided with her Darling Travel Grant investigating education and learning programs at regional and major galleries.

TOURING EXHIBITIONS (other organisations)

Pat Brassington: *Á Rebours ACCA Touring Exhibition*, curated by Juliana Engberg, October–November, 2014

Bodywork Australian Jewellery 1970–2012: A National Gallery of Australia (NGA) Touring Exhibition, curated by Dr Robert Bell AM, Senior Curator of Decorative Arts and Design, National Gallery of Australia, November–December, 2014

NPPP (National Photographic Portrait Prize), curated by Sarah Engledow and toured by the National Portrait Gallery, Canberra, February–March, 2015

DRG PUBLICATIONS

Exhibition catalogue: *Fashion Fancies: Textiles from the Moon Collection, DCC Permanent Art Collection Exhibition, 2014* ISBN 978-0-9872560-7-2

Exhibition catalogue: *Others: Colin Langridge Solo Commission, 2014* ISBN 978-0-9872560-8-9

Exhibition catalogue: *tidal: City of Devonport Art Award, 2014* ISBN 978-0-9872560-9-6

Exhibition catalogue: *ReViewing: Lisa Garland, Troy Ruffels, Ilona Schneider, Brian Sollors, The Robinson Photographic Collection, 2015* ISBN 978-0-9942474-0-7

MEMBERSHIP

Friends of the Gallery financial members: 179

VOLUNTEERS + COMMITTEES

Special Committee

The Gallery's Special Committee (SC) changed to 'Special Interest Group' (SIG) late 2014: 9 members (SC), 5 members (SIG). The Gallery's Special Committee continued to support and promote the Gallery. The committee's main focus was on Devonport City Council's Living City Project and the potential inclusion of the Gallery in the project. In line with Council's organisational changes, the committee was changed to a 'Special Interest Group'.

Friends Committee

Friends Committee: 11 members

The Friends Committee held their major fundraiser 'Colours of Spring' luncheon on Melbourne Cup Day at the Gateway Hotel. With support and assistance from Kim Robinson, the Committee raised over a \$1,000. The AGM was held on 21 August, 2014. The Director presented an overview of exhibitions and programs held over the year. All members were returned to their positions with one new member being elected to the committee.

Droogs Young Members Group: 6 members

The Droogs consist of a small number of young community members, most of whom attend college or TasTAFE. While continuing to assist with major projects such as The Laneway Project and the 4–8 Film Festival, this year The Droogs took on a new project that involved interviewing artists at their exhibition openings. These vox-pop style interviews have been edited by the young members and uploaded on YouTube and Facebook.

VOLUNTEERS – PROGRAMS

Volunteers worked with the Gallery on a number of programs including minor conservation work, library cataloguing utilising the Dewey system, administration and welcoming visitors, interviewing artists, assisting at openings and assisting on public programs.

PARTNERS

Devonport Regional Gallery Friends Committee, Collins Real Estate, Devonport Entertainment Centre, Bass Strait Maritime Centre, Devonport Bookshop, CMax Devonport, Devonport TasTAFE, Tasmanian Alkaloids, Contemporary Art Tasmania (CAT) Hobart, Burnie Regional Art Gallery, East Devonport Family Day Care Centre, Youth Family and Community Connections, QVMAG, TMAG Hobart, MAC (Moonah Arts Centre), University of Tasmania, Tasmanian Early Years Foundation, CCP, NETS Victoria, ACCA, NGA.

GRANTS

Tasmanian Government, towards Devonport Regional Gallery Annual Program 2014–2015

Tasmanian Alkaloids, towards *Tidal: City of Devonport Art Award Festival*

National Youth Week 2014 Community Grant, towards: *Reclaim the Lane*, state launch, Devonport

Museums Australia National Conference Bursaries awarded to Ellie Ray and Andrew Worsley

The Darling Travel Grant awarded to the Director in 2013 was undertaken in August 2014.

The Director researched learning and education programs at the Art Gallery of New South Wales, Newcastle Art Gallery, Maitland Gallery and the Lake Macquarie City Gallery.

ART WORK LOANS

Outward:

AGNSW (Art Gallery of New South Wales) loan of Julie Gough's, 'We Ran/I Am ...' (shortened title) for the exhibition *Embodiment* at AGNSW, February–March 2015, #2007.001 a-v
BRAG (Burnie Regional Art Gallery) Raymond Arnold, *Justify the Line 1 to 4, Iron Blow Re-excavation*, 1992, #1992.051-054 for the touring exhibition Raymond Arnold: Unique States Seriality & the Panoramic curated by Professor Sasha Grishin

Promoting art and culture to young people in the region

The 2014–15 program once again delivered a diverse range of exhibitions including three national touring exhibitions and three exhibitions curated by Gallery staff. Education and public programs were very well attended with many new programs designed and presented by the Education and Public Programs Officer, Dianne Sheehan. National Youth Week was officially launched at the 2015 *Reclaim the Lane* festival presented by the Gallery and its young members, The Droogs, along with Youth Family and Community Connections. Attractions included live music by young local talent, the very popular sketch book display from local youths, and health and well-being stalls. Artist-in-residence Laura McMahon presented 'paste-up' workshops prior to the festival and a paste-up mural on a wall overlooking Rooke Lane.

THE COLLECTION

Work continues on scanning negatives from the Robinson Collection. It is envisaged the project will continue for more than a year under the supervision of Collection Assistant Andrew Worsley and with assistance from Gallery volunteers. High resolution scans will be used for research and image reproduction for exhibitions.

Acquisitions

Collecting and managing works of art that demonstrates: a) heritage significance and b) excellence in contemporary Tasmanian practice

With the completion of the Collection relocation to the purpose-built DCC Art Storage Facility at the end of June 2014, the Gallery celebrated with the very popular exhibition *Fashion Fancies: Textiles from the Moon Collection*. The Moon Collection consists of antiquities collected by the Moon family who lived in Devonport, and their ancestors who lived in Scotland. Their collection was bequeathed to the DCC Permanent Collection after the death of the three Moon sisters. In the process of relocating the Collection, a number of ball gowns and textiles were identified as requiring specialist conservation work which was carried out in Melbourne. Curator Dunja Rmandic presented a public floor talk and the word soon spread quickly amongst the community with visitation numbers higher than usual and education programs attracting many schools to the exhibition.

Although acquisition funds were limited this financial year, the Gallery still managed to purchase and receive new works for the DCC Permanent Collection. With the Collection now safely housed in its purpose-built facility, staff are better positioned to manage the Collection and carry out minor conservation work.

Purchased Acquisitions:

Colin Langridge: The Devonport City Council purchased two sculptures by Colin Langridge from his Solo Commission in 2014 titled *Not Knowing 1*, #2014.024 and *Not Knowing 11*, #2014.025.a-b. The artist has since shown the remaining commissioned works in recent exhibitions with great success.

Joel Crosswell: The acquisitive *Tidal: City of Devonport Art Award* was launched in December 2014. Joel Crosswell's fascinating framed ink drawing titled *Galaxias* was judged the winner of the \$15,000 award and is now held in the *Tidal*, DCC Permanent Art Collection, *Galaxias*, #2014.026.

Donated and Commissioned artworks:

Owen Lade: *West Coast Bush*, 1968, oil on Masonite, #2014.005

Lisa Garland: *Sarah Jane*, 2015, giclée print, #2015.007 and *Mrs Dick*, 2015, giclée print, #2015.007

Ilona Schneider: *Untitled [Spirit of the Night]*, 2015, giclée print, #2015.003 and *Untitled [Spirit of the Present Age]*, 2015, giclée print, #2015.004

Brian Sollars: *Searoad Mersey Dockside*, 2015, giclée print, #2015.005 and *Shrouded Farm*, 2015, giclée print, #2015.006

Troy Ruffels: *Found image (Robinson negative) #3*, digital print on composite aluminium, #2015.001 and *Found image (Robinson negative) #4*, digital print on composite aluminium, #2015.002.

The Collection Corner

The Curator of Collections, Dunja Rmandic, established a corner in the foyer of the Gallery to present works from the Permanent Collection. Works were selected to reflect an aspect of each exhibition presented in the Main Gallery.

Exhibition Program

The Gallery presented a total of fourteen exhibitions from July 2014 to June 2015. In the Main Gallery: four staff-curated exhibitions, the *Tidal* award, the community art exhibition and four touring exhibitions from external organisations. The Little Gallery: four emerging artist exhibitions were presented.

Education and Public Programs

An average of eight education and public programs were presented in conjunction with each exhibition. These included daytime and evening workshops, classes, performances, education programs and outreach learning programs. With a new staff member in the role of Education and Public Programs new programs were planned and delivered with increased visitation. An overview of programs and highlights are listed at the end of the report.



Volunteers Belinda Holloway, Georgia Hyde and Anne Thomas catalogue the Art Library

EXHIBITION PROGRAM 2014–15

28 June – 10 August

Fashion Fancies: Textiles from the Moon Collection, DCC Permanent Collection

Curator: Dunja Rmandic

Overall Attendance: 2,525



Guest speaker Dr Gerard Vaughan opening 'Fashion Fancies'

The relocation of the Collection was the inspiration for this very popular exhibition. This exhibition was the first Collection exhibition to be displayed since the completion of the new art storage facility and relocation. It highlighted the skills in design and dressmaking from the late nineteenth and early twentieth centuries whilst also presenting the viewer with items and objects indicative of a local Devonport family's passion for overseas travel and collecting. The textiles in the Moon Collection were the focus of this exhibition and provided visitors with a glimpse into the history, society and fashions of previous generations. A full-colour catalogue accompanied the exhibition.



Guests viewing a display at the 'Fashion Fancies' opening



Boat Harbour primary students 'Others' exhibition
16 August – 28 September
Others: Colin Langridge Solo Commission
Curator: Ellie Ray
Overall Attendance: 2,143



Others: Colin Langridge (installation view)

Colin Langridge was the recipient of the Devonport Regional Gallery's 2014 Solo Commission. The program provides early- to mid-career artists with the opportunity to create new work based on experimentation and a solid conceptual grounding. The sculptural objects produced by Langridge over a twelve-month period were testament to the artist's commitment and skill. The works inspired a range of education and public programs delivered by staff. Two of the commissioned works were acquired for the Devonport City Council Permanent Collection. A full-colour catalogue with an essay by the curator accompanied the exhibition.

4 October – 2 November

Pat Brassington: Á Rebours

ACCA (Australian Centre for Contemporary Art) Touring Exhibition

Curator: Juliana Engberg, Director ACCA

Overall Attendance: 1,821

DRG was extremely fortunate to secure this touring exhibition by well-known Australian photo-media artist Pat Brassington. The survey exhibition highlighted the artist's prolific output of analogue photographs including collaged work and later digital imaging. The Gallery conducted 'Real Surreal' school holiday collage programs, floor talks, and a Torchlight Tour where participants were each given a torch to view the works 'in a different light' while being guided through the exhibition by the director, Ellie Ray.



Pat Brassington, *The Secret*, pigment print, 2010



Torchlight tour of *Pat Brassington: Á Rebours* (a surreal event)

8 November – 7 December

Bodywork Australian Jewellery 1970–2012

NGA Touring Exhibition

Curator: Dr Robert Bell AM, Senior Curator of Decorative Arts and Design, NGA

Overall Attendance: 1,836



Brenda Ridgewell, *Space edifice*, armband, 2002,
925 silver & 9 carat gold, National Gallery of Australia

This touring exhibition showcased jewellery from the National Gallery of Australia's collection. It included the work of 42 jewellers and explored jewellery from a number of viewpoints including romanticism, nature, technics, social message and sculpture for the body. The exhibition was extremely popular with primary school students who created their own paper jewellery.



Our Lady of Lourdes students fascinated by the jewellery displays from the NGA Collection

Solitary: Works on paper from the DCC Permanent Collection

Curator: Dunja Rmandic



Brett Whiteley, *The Young Baboon*, 1961 acc 1966.008

Mirroring the *Bodywork* touring exhibition, *Solitary* drew inspiration from the idea of jewels as items existing in their own right. The exhibition highlighted works on paper and sculpture from the DCC Permanent Collection as 'jewel-like objects'. Art works included works on paper by Brett Whiteley, Helen Wright, Filomena Delacruz, Kaye Louise Green, Leonie Casbolt, Stephen Walker and Rylton Viney, and sculpture by Ian Bonde.

The Little Gallery

***Transference*: Josh Foley**



Josh Foley: *Farmyard Blues*, 2014, oil on board

Josh Foley painted directly onto the walls of The Little Gallery to create his installation, *Transference*. His intention was to push the boundaries of landscape painting and provide viewers with a new context in which to view this popular genre. The artist presented a floor talk to TasTafe students and the public.

13 December – 1 February 2015
Tidal: City of Devonport Art Award
Overall Attendance: 4,262



Joel Crosswell, *Galaxias*, Ink on paper, 2014

The *Tidal* finalists' exhibition and festival has become a major feature on the North West Coast. Held every two years, it continues to attract high visitation. Entries for the award reached a record 260 with 27 artists selected for the finalist exhibition. The judges, Erica Green, Director Samstag Museum, University of South Australia and Sean Kelly, Coordinator Moonah Arts Centre, were delighted with the standard of entries. The judges selected Tasmanian artist Joel Crosswell as the recipient of the 2014 award for his five panelled ink on paper drawing titled *Galaxias*, 2014. The work is now part of the DCC Permanent Collection.

The Tidal Festival held in conjunction with the Tidal Award provided a varied program of workshops, including art-making, music and discussions on coastal preservation. Artist-in-residence Marcus Tatton created coastal-inspired sculptures and delivered workshops. The public learnt about the rich Aboriginal history of our region through a cultural walk at the Mersey Bluff facilitated by David Gough



Tidal Exhibition Finalists opening

7 February – 8 March
National Photographic Portrait Prize
NPPP Touring Exhibition
Curator: Sarah Engledow
Overall Attendance: 2,381



Gary Grealy, *The Art Lovers 'Megan'*, Giclee print

This prestigious award is selected from a national field of entries that reflect the distinctive vision of Australia's aspiring and professional portrait photographers and the unique nature of their subjects. The winner of the 2014 Award was Andrew Cowen for his portrait titled *Matthew Martin*. The Gallery was fortunate to have Andrew Cowen as guest speaker at the exhibition opening and the curator, Sarah Engledow, presenting a floor talk the following day. While only on display for four weeks, the exhibition attracted healthy numbers from the community, schools and visitors to the region.



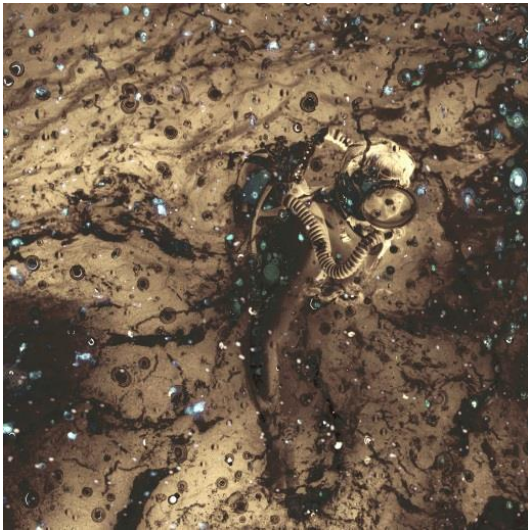
Floor talk with the curator, Dr Sarah Engledow

13 March – 10 May

ReViewing: Lisa Garland, Troy Ruffels, Ilona Schneider, Brian Sollars, The Robinson Photographic Collection

Curators: Dr Ellie Ray & Dunja Rmandic

Overall Attendance: 3,977



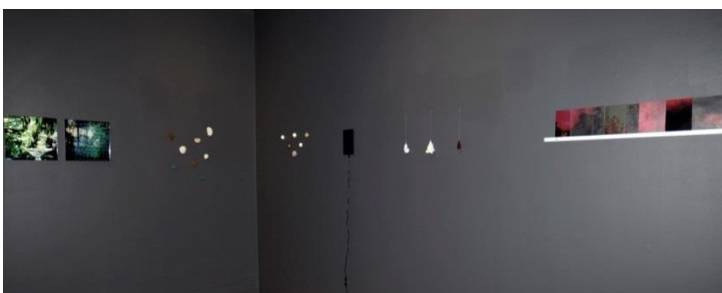
Troy Ruffels, *Found image (Robinson negative)*
#3, digital print on composite aluminium, #2015.001

ReViewing was presented in association with the Tasmanian International Arts Festival. Four Tasmanian artists were invited to review and respond to photographs in the Robinson Collection, which forms a part of the DCC Permanent Collection. Images from the Robinson Collection that informed each artist's work were printed from the original negatives and displayed alongside the artist's commissioned work. Foregrounding the sphere of photography from analogue to digital, documentary and social history to fine art, *ReViewing* provides the viewer with points of entry into both early photographic imagery and contemporary photographic perspectives.

The Little Gallery

Board(rs) Sawtooth ARI Board Members Exhibition

This exhibition was presented by board members from Sawtooth ARI. The exhibition included a range of diverse, small works by Jennifer Dickens, Maris Molin, Samantha Dennis, Mat Carey, Gillian Marsden, Mel de Ruyter, David Hamilton, Helene Weeding, Sonja Brough and Patrick Sutczak. The exhibition married concepts of borders and landmarks with natural and built environments.



Sawtooth ARI board Members Exhibition, *Board(rs)* installation view

16 May – 31 May

NWAC Annual Community Artists Exhibition

Overall Attendance: 1,059

Once again the North West Art Circle presented an annual exhibition comprising work by its members. The exhibition displays works created by an eclectic group of art enthusiasts and includes awards in different categories.



NWAC Annual Exhibition, Installation view

The Little Gallery

Selena de Carvalho: *The Evolutionary StraitJacket*

Selena de Carvalho created imaginative sculptural works that referenced a life form's inability to adapt to changing environments. It also referred to the unique or particular evolutionary adaptation that renders a creature dependent on an endemic environment for survival.



Selena de Carvalho, *The Evolutionary StraitJacket* installation view

6 June – 12 July

True Self: David Rosetzky Selected Works

CCP & NETS Victoria Touring Exhibition

Curators: Naomi Cass, Director & Kyla McFarlane, Associate Curator, CCP, Melbourne

Overall Attendance (up to 30 June 2015): 2,169



David Rosetzky presenting a talk to Don College, Hellyer College and St Brendan Shaw

David Rosetzky is one of Australia's finest artists and he creates intensely beautiful lens-based works exploring identity, subjectivity and relationships. This touring exhibition surveyed 15 years of practice working as an individual artist and collaboratively with professionals from the fields of theatre, dance, film and sound. The artist assisted with the installation and presented a talk to college students from Devonport and Burnie. The exhibition was accompanied by a full-colour, 52-page publication and education resource material.



David Rosetzky *True Self* installation view

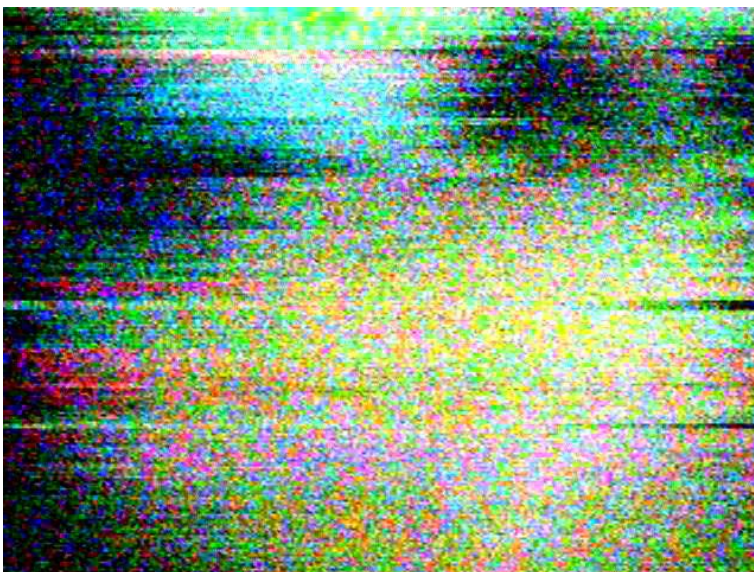
The Little Gallery

Nancy Mauro-Flude: Magical Secrecy Tour



Nancy Mauro-Flude, *Magical Secrecy Tour*, 2015 Installation view

The final exhibition in The Little Gallery for 2014–15 was Nancy Mauro-Flude's video work titled *Magical Secrecy Tour*. Representing the artists' body moving through space the viewer was presented with colourful glitches – where the video 'breaks down' highlighting the artists' appeal for malfunctions and changes in transmission. The artists installation was popular with students of varying ages who were mesmerised by the colours and rapid movement in the videos.



Nancy Mauro-Flude, *Magical Secrecy Tour*, 2015 Installation view (2)

EDUCATION + PUBLIC PROGRAMS 2014–15

EDUCATION PROGRAM HIGHLIGHTS

At the Gallery

The education programs reached a diverse audience of young people and students this year. New teachers and students were welcomed to the Gallery and programs were taken out to new venues. With Dianne Sheehan joining the Gallery team in September 2014, there have been new initiatives and programming, with young visitors engaging keenly with the exhibitions. The hands-on workshops, art conversations and learning programs continue to inspire young minds.

The education program that accompanied *ReViewing* involved working with six classes in exploring their local history through photography. Each class was provided with a series of Robinson Collection photographs of a particular location. Classes researched this location's history then visited it to take photographs, comparing changes and historical differences. A visit to the Gallery's exhibition *ReViewing* was also included to demonstrate how the four contemporary photographers used the Robinson Collection to inspire their works.

Outreach Program

Outreach programs were conducted at Dana Drive Children's Centre and East Devonport Child and Family Centre. Both centres were presented with the Gallery's Little Aesthetics Early Years Program. The Gallery's connection with the East Devonport Child and Family Centre was made possible through a partnership with the Tasmanian Early Years Foundation and TMAG, and enabled Gallery staff to observe early learning programs and learn new approaches and techniques for working with young people and families at risk.

PUBLIC PROGRAM HIGHLIGHTS

The Gallery's public programs cater for different age groups and aim to complement each exhibition on display, providing a creative outlet for the community of Devonport. While staff delivered many programs, the Gallery also contracted local and state-wide arts practitioners to run programs for a range of ages and abilities. The highlights of 2014–15 include:

Portal

Portal was a new community project launched in November 2014, which invited residents and visitors of North West Tasmania to take one photo on one particular day and share it with the Gallery for a community exhibition. A total of 64 registrations were received for the project prior to the 'capture day', which was Saturday 3 January 2015. The 52 photographs submitted were printed and exhibited in a vacant shopfront, 18 Rooke Street Devonport, from 23 January to 1 February 2015.

Tidal Festival

The Tidal Festival was offered in conjunction with the Gallery's *Tidal: City of Devonport Art Award* exhibition. The Festival ran from 27 January to 1 February 2015 and featured workshops and events across Devonport. Venues included the Devonport Regional Gallery, Bass Strait Maritime Centre and Mersey Bluff. A highlight of the Festival was artist-in-residence Marcus Tatton, who created sculptures and delivered workshops at Mersey Bluff across three days of the Festival. Tatton's large sculptures were created on the shoreline and sparked significant community interest. Other events included a blogging workshop, public forum on coastal conservation, a choral workshop and performance, and a historical and cultural walk around the Mersey Bluff headland.

Reclaim the Lane

The annual National Youth Week event, Reclaim the Lane, was delivered again in partnership with Youth, Family and Community Connections and Devonport City Council, with a team of young volunteers aged between 16 and 30 years. Partly funded by the Department of Premier and Cabinet, the Tasmanian National Youth Week office selected Reclaim the Lane as the 2015 launch event for the state. Reclaim the Lane attracted young people from Burnie, Latrobe and Meander Valley, as well as the local Devonport audience, resulting in an increase in participation for the event from previous years.

Reclaim the Lane transformed Devonport's Rooke Lane into a vibrant celebration of youth arts and music for its fourth consecutive year. Artist-in-residence, Laura McMahon, created a new public artwork in the lane alongside other activities including a photo booth, performances by Slipstream Circus and music by local young musicians. Devonport Regional Gallery's young members, The Droogs, showcased their Sketchbook Project exhibition, which featured over 60 sketchbooks filled by young people in Devonport and surrounding areas with their artwork.



Reclaim the Lane, Youth Week, April 2015

EDUCATION AND PUBLIC PROGRAMS 2014–15

	NUMBER OF PROGRAMS	NUMBER OF PARTICIPANTS
EDUCATION		
Workshops	27	1356
Floor Talks	22	320
Outreach	16	353
Total Education Programs and Participants	65	2029
PUBLIC PROGRAMS		
Workshops	53	515
Floor Talks, including In Conversation with the Artist and Curator	11	184
Outreach	15	1376
Total Public Programs and Participants	79	2075
OVERALL EDUCATION AND PUBLIC PROGRAM TOTALS	144	4104
EVENTS		
Devonport Regional Gallery Events, including Exhibition Openings and Concerts	13	574
Partner Events, including Reclaim the Lane and Concerts, Book Launches and Live Music	4	562
Total Events and Participants	17	1136

EDUCATION AND PUBLIC PROGRAMS 2014–15

1.



2.



3.



4.





5.



6.

1. Little Aesthetics Outreach Program at Dana Drive
2. Little Aesthetics Workshop, Bodywork touring exhibition 2014
3. Little Aesthetics Colin Langridge Solo Commission 2014
4. Tidal Tree launch with Devonport Primary School part of Tidal: City of Devonport National Art Award 2014
5. Devonport Primary School
6. 1,2,3...Create! Program participants, 2015



7.



8.



9.

- 7. *Pulp Fashion* jewellery workshop, November 2014
- 8. *Reclaim the Lane*, Artist in Residence, Laura McMahon
- 9. *Tidal Zone*, 'Seaspores' by Marcus Tatton, Artist in Residence, Tidal Festival

Cost Centre Financial Report
Community Development & Engagement Department
Devonport Regional Gallery

YTD to June 2015

3130

	2015 YTD		YTD Variance		Full Budget 2015
	Budget	Actual	\$	%	
INCOME					
Rates & Utility Charges					
Fees & Charges					
40025 Fees - Facility Hire	-	250	250	0.0%	-
41263 Sale of Goods	7,500	8,345	845	11.3%	7,500
Grants					
41410 Grant Income - Operating	66,000	63,000	(3,000)	-4.5%	66,000
Contributions					
41281 Donations Income	10,000	2,707	(7,294)	-72.9%	10,000
Dividends and Other Investment Income					
40029 Interest Received	60	55	(5)	-8.3%	60
Other Income					
41307 Sundry Income	8,000	14,158	6,158	77.0%	8,000
TOTAL INCOME	91,560	88,515	(3,045)	-3.3%	91,560
EXPENSES					
Employee Benefits					
60001 Salaries & Wages -	199,835	187,693	12,142	6.1%	199,835
60002 Salaries & Wages Overtime	-	656	(656)	0.0%	-
60003 Annual Leave	15,792	14,623	1,169	7.4%	15,792
60005 Long Service Leave	4,735	7,114	(2,379)	-50.2%	4,735
60006 Salaries & Wages - Timesheet (Ops Centre)	-	980	(980)	0.0%	-
60008 Sick Leave	5,050	7,424	(2,374)	-47.0%	5,050
60009 Allowances	-	159	(159)	0.0%	-
60014 Superannuation	25,852	23,306	2,546	9.9%	25,852
63205 Training & Conferences	2,000	3,620	(1,620)	-81.0%	2,000
63435 Uniforms & Protective Clothing	-	77	(77)	0.0%	-
68005 W/Comp & Payroll Tax Allocation	21,182	18,822	2,360	11.1%	21,182
Materials & Services					
61001 General Materials	28,000	28,361	(361)	-1.3%	28,000
61130 Cleaning Services Contract	4,334	1,472	2,862	66.0%	4,334
63040 Utilities - Electricity	22,943	15,452	7,491	32.7%	22,943
63042 Utilities - Water	644	-	644	100.0%	644
63080 Telephone	3,000	2,861	139	4.6%	3,000
63081 Telephone - Mobile	1,500	1,045	455	30.3%	1,500
63132 Contractors	14,651	18,698	(4,047)	-27.6%	14,651
63191 Exhibition Costs	35,000	47,989	(12,989)	-37.1%	35,000
63196 Advertising	12,420	11,961	459	3.7%	12,420
63403 Postage	3,000	2,605	395	13.2%	3,000
63404 Printing, Stationery & Office Supplies	4,000	2,503	1,497	37.4%	4,000
63406 Licences	400	485	(85)	-21.2%	400
63408 Subscriptions	950	733	217	22.9%	950
63413 Security Services Contract	1,133	818	315	27.8%	1,133
63422 Freight	5,000	613	4,387	87.7%	5,000
63436 Goods Purchased for Resale	5,000	3,367	1,633	32.7%	5,000
63460 Catering	3,000	2,790	210	7.0%	3,000
63461 Meals	600	809	(209)	-34.8%	600
63466 Entertainment & Hospitality	-	143	(143)	0.0%	-
63500 Travel - Airfares	2,000	1,026	974	48.7%	2,000
63501 Travel - Accommodation	2,000	730	1,270	63.5%	2,000
63504 Travel - General Costs	800	1,148	(348)	-43.6%	800
63611 Software Licences	-	506	(506)	0.0%	-
Depreciation					
62001 Depreciation	42,100	41,258	842	2.0%	42,100
Finance Costs					
Levies & Taxes					
63041 Council Rates	5,150	5,149	1	0.0%	5,150
Other Expenses					
Internal Charges and Recoveries					
68002 Internal Charges - Plant Hire	9,100	9,100	0	0.0%	9,100
68008 Internal Charges - Operations Centre	-	1,880	(1,880)	0.0%	-
68009 Internal Charges - Customer Service	15,432	15,432	-	0.0%	15,432
68010 Internal Charges - Finance	9,137	9,137	(0)	0.0%	9,137
68011 Internal Charges - HR, Payroll & Risk Mgt	27,047	27,047	(0)	0.0%	27,047
68012 Internal Charges - IT	41,244	41,244	-	0.0%	41,244
68015 Internal Charges - Maintenance	20,502	15,457	5,045	24.6%	20,502
TOTAL EXPENSES	594,532	576,289	18,243	3.1%	594,532
NET OPERATING SURPLUS / (DEFICIT)	(502,972)	(487,774)	15,199	-3.0%	(502,972)



Little Aesthetics Outreach East Devonport Family Day Care Centre

